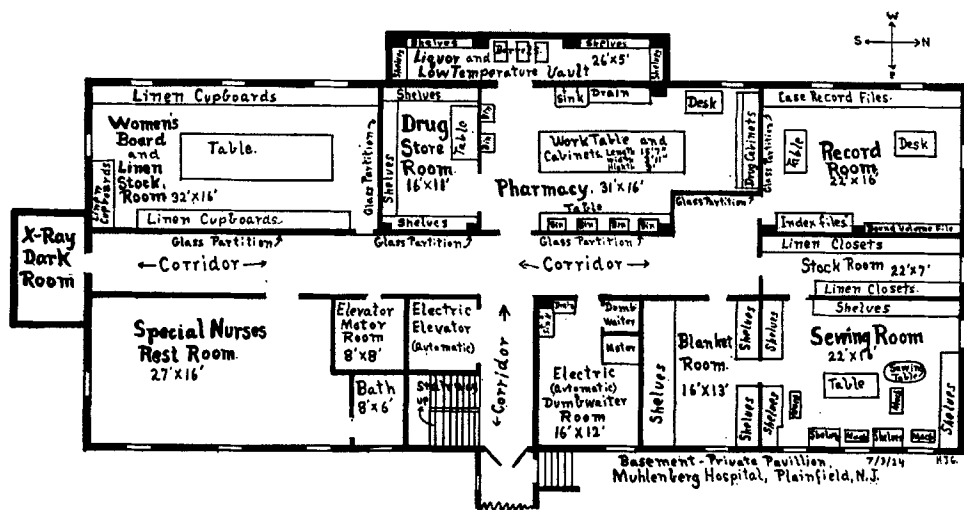


A HOSPITAL PHARMACY.*

BY HENRY J. GOECKEL.¹

"If you would have a thing done right, do it yourself" is a saying which applies to the organization of hospital pharmacies as well as to many other activities. The Hospital Section of the AMERICAN PHARMACEUTICAL ASSOCIATION is perhaps the only organized body capable of properly developing this branch of hospitalization.

It behooves each member of the Section employed in an institution affording good facilities to describe the pharmacy department. The description should include how it functions and coordinates with the rest of the hospital activities. The things in which it is particularly efficient should be noted as well as those which are not satisfactory from a pharmaceutical and institutional view.



Floor Plan of Private Pavilion Basement and Pharmacy, Muhlenberg Hospital, Plainfield, N. J.

In this way comparative data can be accumulated which will be of value for furthering pharmacy. It will afford a means of presenting data for the governing bodies and for the architects to use in planning hospital organizations and construction.

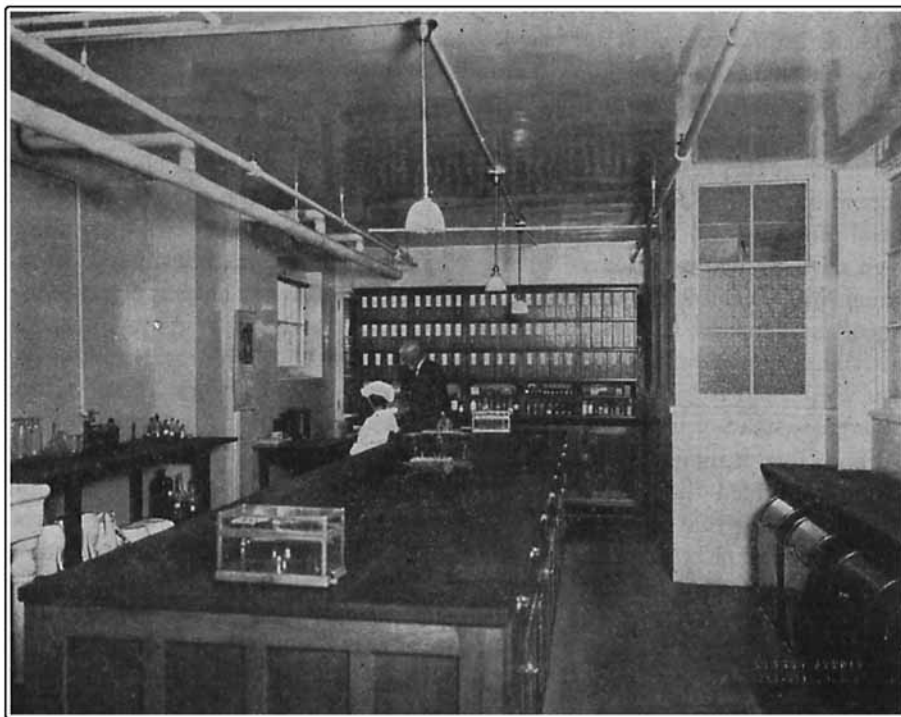
To this end the plans, photographs and a concise description of the pharmacy of Muhlenberg Hospital at Plainfield, New Jersey, will be presented. A year or more ago room had to be provided for an enlarged linen department and for a record department. The institution decided at the same time to provide a room for the Women's Board to meet and to prepare supplies, and also a new pharmacy, as the one it had was inadequate.

* Read before Section on Practical Pharmacy and Dispensing, A. PH. A., Buffalo meeting 1924.

The paper was accompanied by three photographs—Drug-store room, Pharmacy, View of vault from pharmacy; two drawings—Ground plan of hospital, Floor plan of private pavilion, basement and pharmacy. Half-tone of the pharmacy and etching of the floor plan are included in the article.

¹ Consulting pathologist, Somerset Hospital, Somerville, N. J.

The pharmacy, as will be seen from the photograph, is unusually spacious and is ample for any needs. It differs from that in many institutions in having the drug-store room and the vault as part of the pharmacy. The vault is beneath the entrance to the building. This is of very heavy stone construction, as one and a half foot solid stone columns are supported by this foundation.



Pharmacy, Muhlenberg Hospital, Plainfield, N. J.

The department is conveniently located near the electric elevator, dumb waiter and stairs. It is not connected with the clinic unit as would perhaps be advisable in large metropolitan hospitals. The community in which this hospital is located has very efficient charity and visiting nurse associations, so no dispensary pharmacy is needed.

LANKENAU HOSPITAL, OPENS RESEARCH LABORATORY.

Donated by Rodman Wanamaker, the Research Institute of Lankenau Hospital, Philadelphia, started in its work the last week of April without official announcement or display. Due to Mr. Wanamaker's idea that the advanced medical research work to be conducted

here needs no publicity or ostentation, the dedication by him was a private one, to which none but members of the staff and a few friends were invited.

The Research Institute is a 3-story, fire-proof, brick building. So far, ten rooms have been fully equipped, and eighteen co-workers and assistants comprise the staff of Dr. Stanley P. Reimann.